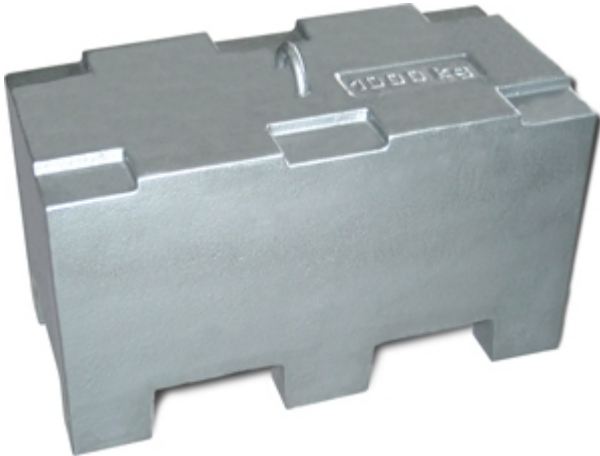


## M1 MASSES

### M1 PRECISION CLASS WEIGHTS FOR LARGE CAPACITY SCALES



Heavy mass weights, conforming to OIML-R111 Recommendation in class M1, suitable for legal metrology and industrial applications, particularly for the calibration of weighbridges and high-capacity systems. Easy to transport by trolley or crane, suitable for stacking. They are equipped with a watertight, high-density lateral calibration bush for greater accuracy stability over time. The M1 accuracy class means these weights can be used for checking and calibrating scales and weighing systems in class III, up to 10.000e.

Ideal for ISO quality weighing instrument verification.

Our solutions for quality  
assurance and certainty  
of your measurements.

## MAIN FEATURES

- M1 PRECISION CLASS
- MADE IN PAINTED STEEL WITH FERROUS FILLER (WM1PK2000)
- MADE IN PAINTED CAST IRON (WM1VK100-WM1VK200-WM1VK500-WM1VT1)
- INITIAL VERIFICATION STAMP AVAILABLE UPON REQUEST
- ACCREDIA (EA) CALIBRATION CERTIFICATE UPON REQUEST
- STACKABLE/EASILY TRANSPORTABLE WITH CART OR CRANE (only for cast iron weights)
- MINIMUM SIZE FOR STOCKING AND TRANSPORTING
- HIGH DENSITY AND ACCURATE STABILITY IN TIME
- HERMETICALLY SEALED LATERAL CALIBRATION SLOT.

### CALIBRATION SERVICE

Below you can see a preview of the calibration certificate. Please pay special attention to point 2. "Required information", data to be communicated to the laboratory when requesting calibration.

Calibration Certificate



QUALITY ASSURANCE AND CERTAINTY OF YOUR MEASUREMENTS



**OFFICE**

Via Picasso, 18/20  
20025 Legnano (MI) - Italy

SALES AND TECHNICAL ASSISTANCE SERVICE

*All the specifications and images can be subject to variations and upgrades without prior notice.*