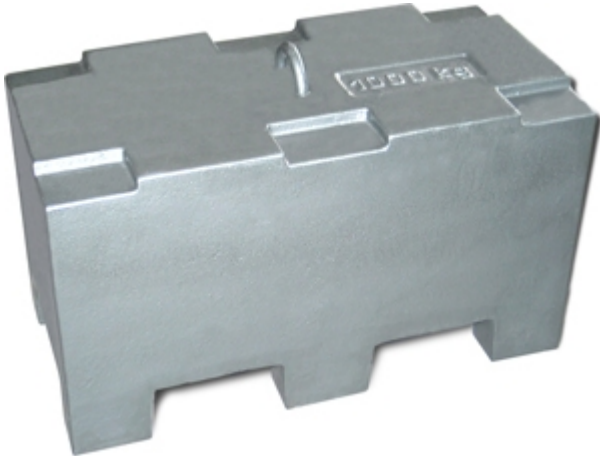




MASSE ESTERO

## M1 PRECISION CLASS WEIGHTS FOR LARGE CAPACITY SCALES



Weights suitable in legal metrology and industrial applications; particularly suitable for the calibration of weighbridges and high capacity systems.

The M1 precision class allows for the use of these weights for the check and calibration of scales and class III weighbridges up to 10000e.

Our solutions for quality  
assurance and certainty  
of your measurements.

## MAIN FEATURES

- M1 PRECISION CLASS
- MADE IN PAINTED STEEL WITH FERROUS FILLER (WM1PK2000)
- MADE IN PAINTED CAST IRON (WM1VK100-WM1VK200-WM1VK500-WM1VT1)
- INITIAL VERIFICATION STAMP AVAILABLE UPON REQUEST
- ACCREDIA (EA) CALIBRATION CERTIFICATE UPON REQUEST
- STACKABLE/EASILY TRANSPORTABLE WITH CART OR CRANE (only for cast iron weights)
- MINIMUM SIZE FOR STOCKING AND TRANSPORTING
- HIGH DENSITY AND ACCURATE STABILITY IN TIME
- HERMETICALLY SEALED LATERAL CALIBRATION SLOT.

### CALIBRATION SERVICE

Below you can see a preview of the calibration certificate. Please pay special attention to point 2. "Required information", data to be communicated to the laboratory when requesting calibration.

Calibration Certificate



QUALITY ASSURANCE AND CERTAINTY OF YOUR MEASUREMENTS



**OFFICE**

Via Picasso, 18/20  
20025 Legnano (MI) - Italy

SALES AND TECHNICAL ASSISTANCE SERVICE

*All the specifications and images can be subject to variations and upgrades without prior notice.*